



## 40LBS-W Series

*Chilled Water Fan Coil Unit*

66,700-186,500 BTU/H



World's No.1 Air Conditioning Expert

[www.carrier.co.th](http://www.carrier.co.th)

# Specification

Model	40LBS006W				40LBS008W				40LBS010W				40LBS012W				40LBS015W					
Total Cooling Capacity	kW		19.5	23.7	24.0	29.1	33.1	39.6	37.0	43.7	46.4	54.7										
	Btu/hr.		66,700	80,800	81,900	99,300	112,900	135,100	126,400	149,000	158,200	186,500										
Power Supply	V/Ph/Hz		380/3/50																			
Air Flow Rate	Rate		2,100				2,600				3,500				4,000				5,100			
	Min-Max		1800-2100				2300-2600				3200-3500				3500-4000				4500-5100			
Cooling Coil	Coil Arrangement		Row/FPI		3R/14 FPI	4R/14 FPI	3R/14 FPI	4R/14 FPI	3R/14 FPI	4R/14 FPI	3R/14 FPI	4R/14 FPI	3R/14 FPI	4R/14 FPI	3R/14 FPI	4R/14 FPI	3R/14 FPI	4R/14 FPI				
	Coil Face Area		Sq.Ft.		4.44	4.44	5.31	5.31	7.15	7.15	8.00	8.00	10.22	10.22								
	Tube / Fin Material Type		COPPER TUBE / ALUMINIUM FIN																			
No. of Circuit			1	1	1	1	1	1	1	1	1	1	1	1	1	1	1	1				
Fan	Type		CENTRIFUGAL FORWARD CURVED BLADE																			
	Size		inch		10"x10"	10"x10"	10"x10"	10"x10"	12"x12"	12"x12"	10"x10"	10"x10"	12"x12"	12"x12"								
	QTY				1	1	1	1	1	1	2	2	2	2								
	Revolution Speed		Std.		rpm	720	720	810	810	720	720	789	789	715	715							
Motor	Power Supply		V/Ph/Hz		380/3/50																	
	Type		TEFC - Totally Enclosed Fan Cooled																			
	Power		HP		3/4 (4P)	3/4 (4P)	1 (4P)	1 (4P)	2 (4P)	2 (4P)	2 (4P)	2 (4P)	2 (4P)	2 (4P)	3 (4P)	3 (4P)						
	Revolution Speed		Max		rpm	1,450	1,450	1,450	1,450	1,450	1,450	1,450	1,450	1,450	1,450	1,450	1,450	1,450				
Accessories	Fan Pulley				180-1A-25	180-1A-25	160-1A-25	160-1A-25	180-1A-25	180-1A-25	225-1B-25	225-1B-25	250-1B-20	250-1B-20								
	Motor Pulley				90-1A-14	90-1A-14	90-1A-19	90-1A-19	90-1A-24	90-1A-24	125-1B-24	125-1B-24	125-1B-28	125-1B-28								
	Belt				A-33	A-33	A-32	A-32	A-34	A-34	B-48	B-48	B-54	B-54								
	Belt Q'ty				1	1	1	1	1	1	1	1	1	1	1	1	1					
Air Filter	Type		Washable Aluminium Air Filter																			
	Q'ty Size (Width x Height x Thickness)		inch		2...460x484x1"	2...460x484x1"	2...460x565x1"	2...460x565x1"	3...452x525x1"	3...452x525x1"	2...16"x25"x1"	2...16"x25"x1"	2...16"x25"x1"	2...16"x25"x1"								
	Thickness		mm.		10.00mm.																	
Gross weight			kg.		110.0	115.0	115.0	120.0	140.0	145.0	210.0	220.0	270.0	280.0								
Connecting Pipe	Water In		Q'ty		inch		1" MPT	1" MPT	1" MPT	1" MPT	1-1/4" MPT	1-1/4" MPT	1-1/4" MPT	1-1/4" MPT	1-1/4" MPT	1-1/4" MPT	1-1/4" MPT					
	Water Out		Q'ty		inch		1" MPT	1" MPT	1" MPT	1" MPT	1-1/4" MPT	1-1/4" MPT	1-1/4" MPT	1-1/4" MPT	1-1/4" MPT	1-1/4" MPT	1-1/4" MPT					
	Drain O.D.		inch		3/4" MPT	3/4" MPT	3/4" MPT	3/4" MPT	3/4" MPT	3/4" MPT	3/4" MPT	3/4" MPT	3/4" MPT	3/4" MPT	3/4" MPT	3/4" MPT	3/4" MPT					

**Remark :**  
 RLA : Rated Load Amps  
 MPT : Male Pipe Tread  
 \*Nominal Capacity based on : Entering Air Temp. 80°F Db / 67°F Wb , At maximum air flow rate  
 \*Ent./Lvg. Water Temp.44/54 F\*

# Performance data

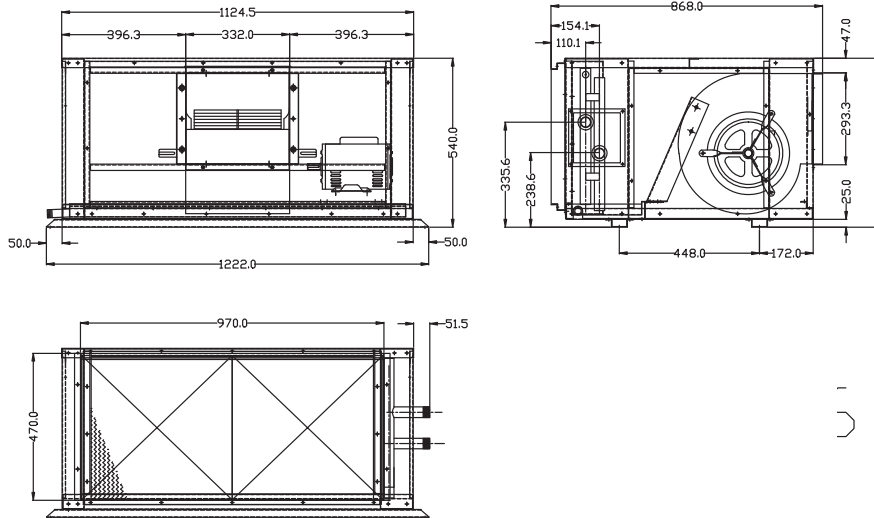
Ent./Lvg. Water Temp. 44 / 54 F° Capacity

MODEL	Air Flow CFM	Air pressure drop in.wg.	Entering Air Temp ( Fdb / Fwb )															
			76/63				78/65				80/67				82/69			
			Total Capacity btu/h	Sensible Capacity btu/h	Water Flow rate gpm	Water Pressure Drop ft.wg.	Total Capacity btu/h	Sensible Capacity btu/h	Water Flow rate gpm	Water Pressure Drop ft.wg.	Total Capacity btu/h	Sensible Capacity btu/h	Water Flow rate gpm	Water Pressure Drop ft.wg.	Total Capacity btu/h	Sensible Capacity btu/h	Water Flow rate gpm	Water Pressure Drop ft.wg.
40LBS006W3R	1800	0.21	45,100	39,100	8.99	6.20	52,300	41,700	10.43	8.10	60,300	44,300	12.03	10.40	69,900	47,200	13.93	13.50
	2100	0.26	50,000	44,100	9.96	7.50	58,800	46,900	11.55	9.70	66,700	49,800	13.30	12.40	77,200	53,000	15.39	16.10
40LBS006W4R	1800	0.29	53,800	44,300	10.74	5.70	62,800	47,300	12.53	7.50	72,400	50,400	14.44	9.70	83,500	53,800	16.65	12.50
	2100	0.36	60,200	50,200	12.00	7.00	70,100	53,600	13.99	9.10	80,800	57,000	16.12	11.70	93,200	60,800	18.59	15.10
40LBS008W3R	2300	0.23	56,600	49,300	11.29	7.40	65,500	52,500	13.06	9.60	75,700	55,800	15.10	12.40	87,300	59,300	17.41	16.00
	2600	0.27	61,400	54,100	12.25	8.60	70,900	57,600	14.15	11.10	81,900	61,200	16.33	14.30	94,400	65,000	18.84	18.40
40LBS008W4R	2300	0.31	67,800	55,900	13.52	7.40	78,800	59,700	15.71	9.60	91,000	63,600	18.16	12.40	104,700	67,800	20.88	15.90
	2600	0.37	74,000	61,800	14.77	8.60	85,900	65,900	17.13	11.20	99,300	70,200	19.80	14.50	114,200	74,700	22.78	18.50
40LBS010W3R	3200	0.24	79,900	69,100	15.94	9.80	92,500	73,500	18.46	12.70	106,500	78,100	21.24	16.30	123,400	83,200	24.62	21.20
	3500	0.28	84,700	74,000	16.90	10.90	98,100	78,700	19.57	14.10	112,900	83,600	22.51	18.10	130,700	89,000	26.08	23.40
40LBS010W4R	3200	0.34	94,500	77,900	18.85	8.50	109,900	83,100	21.93	11.10	126,900	88,600	25.30	14.30	146,100	94,400	29.14	18.00
	3500	0.38	100,700	83,700	20.09	9.50	117,100	89,300	23.36	12.40	135,100	95,100	26.95	15.90	155,700	101,400	31.05	19.90
40LBS012W3R	3500	0.24	86,900	75,500	17.34	7.80	100,700	80,300	20.09	10.10	116,000	85,300	23.13	12.90	134,400	90,900	26.81	16.70
	4000	0.29	94,800	83,500	18.91	9.00	109,900	88,800	21.91	11.70	126,400	94,300	25.20	15.00	146,400	100,400	29.20	19.10
40LBS012W4R	3500	0.31	101,300	84,300	20.21	6.20	117,900	89,900	23.52	8.00	135,800	95,600	27.09	10.20	156,600	102,000	31.23	12.80
	4000	0.37	111,200	93,800	22.18	7.20	129,300	100,000	25.79	9.40	149,000	106,300	29.72	11.90	171,800	113,300	34.27	14.70
40LBS015W3R	4500	0.23	109,100	95,400	21.76	7.50	126,000	101,600	25.12	9.70	146,000	108,100	29.12	12.30	168,000	114,800	33.50	15.30
	5100	0.28	118,600	104,900	23.64	8.70	136,600	111,700	27.24	11.10	158,200	118,800	31.55	14.00	182,000	126,100	36.31	17.10
40LBS015W4R	4500	0.31	127,800	106,900	25.48	6.00	147,800	113,900	29.49	7.60	171,000	121,400	34.11	9.50	196,500	129,100	39.19	11.50
	5100	0.38	139,500	118,200	27.81	6.90	161,300	125,800	32.16	8.70	186,500	134,000	37.19	10.70	214,400	142,500	42.75	12.90

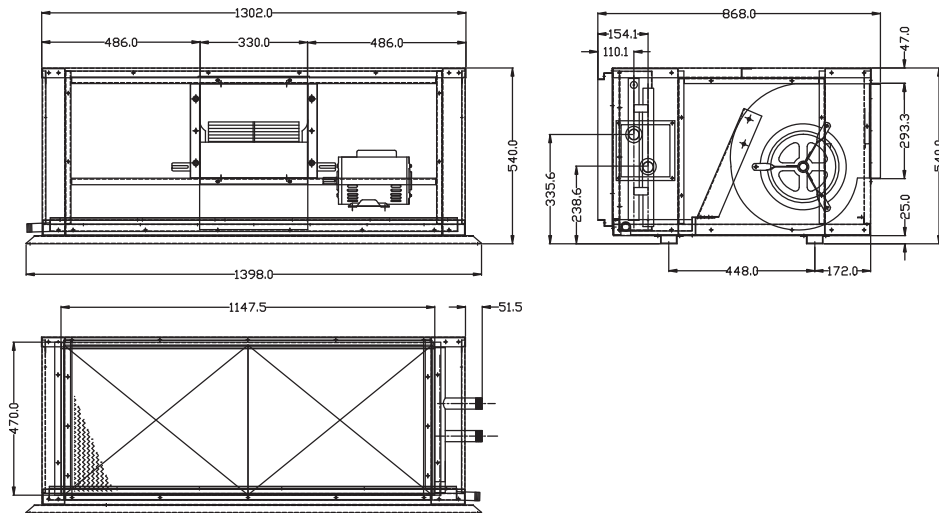
Ent./Lvg. Water Temp. 45 / 55 F° Capacity

MODEL	Air Flow CFM	Air pressure drop in.wg.	Entering Air Temp ( Fdb / Fwb )															
			76/63				78/65				80/67				82/69			
			Total Capacity btu/h	Sensible Capacity btu/h	Water Flow rate gpm	Water Pressure Drop ft.wg.	Total Capacity btu/h	Sensible Capacity btu/h	Water Flow rate gpm	Water Pressure Drop ft.wg.	Total Capacity btu/h	Sensible Capacity btu/h	Water Flow rate gpm	Water Pressure Drop ft.wg.	Total Capacity btu/h	Sensible Capacity btu/h	Water Flow rate gpm	Water Pressure Drop ft.wg.
40LBS006W3R	1800	0.20	42,400	37,800	8.46	5.60	49,300	40,300	9.84	7.30	57,100	42,900	11.38	9.50	66,200	45,700	13.21	12.30
	2100	0.25	47,100	42,600	9.39	6.70	54,600	45,400	10.90	8.70	63,100	48,200	12.59	11.30	73,100	51,300	14.58	14.60
40LBS006W4R	1800	0.27	50,700	42,800	10.11	5.20	59,200	45,700	11.82	6.80	68,600	48,700	13.68	8.80	79,400	52,100	15.84	11.40
	2100	0.34	56,700	48,600	11.32	6.30	66,100	51,800	13.18	8.20	76,600	52,200	15.28	10.70	88,500	58,900	17.66	13.80
40LBS008W3R	2300	0.22	53,300	47,600	10.63	6.70	61,800	50,800	12.32	8.70	71,500	54,000	14.26	11.20	82,800	57,500	16.53	14.60
	2600	0.27	57,800	52,300	11.53	7.70	66,900	55,800	13.35	10.00	77,400	59,300	15.44	12.90	89,600	63,100	17.87	16.70
40LBS008W4R	2300	0.31	63,800	54,100	12.73	6.60	74,300	57,700	14.81	8.70	86,300	61,600	17.21	11.30	99,500	65,600	19.85	14.50
	2600	0.37	69,700	59,700	13.90	7.70	80,900	63,700	16.15	10.10	94,100	67,900	18.77	13.10	108,500	72,400	21.64	16.90
40LBS010W3R	3200	0.23	75,000	66,800	14.97	8.80	87,400	71,200	17.44	11.50	100,800	75,700	20.11	14.80	117,100	80,700	23.36	19.30
	3500	0.27	79,600	71,600	15.89	9.80	92,700	76,300	18.49	12.80	106,800	81,000	21.30	16.40	124,000	86,300	24.73	21.30
40LBS010W4R	3200	0.32	88,900	75,300	17.73	7.60	103,700	80,400	20.70	10.00	120,100	85,700	23.97	13.00	139,000	91,500	27.73	16.70
	3500	0.36	94,800	80,900	18.91	8.50	110,500	86,400	22.04	11.20	128,000	92,100	25.53	14.50	148,000	98,200	29.54	18.40
40LBS012W3R	3500	0.23	81,600	73,000	16.28	7.00	95,100	77,800	18.97	9.10	109,700	82,700	21.88	11.70	127,400	88,100	25.42	15.30
	4000	0.28	89,200	80,700	17.79	8.10	103,700	86,100	20.69	10.60	119,400	91,300	23.81	13.60	138,600	97,300	27.66	17.50
40LBS012W4R	3500	0.30	95,500	81,500	19.05	5.50	111,100	87,000	22.17	7.20	128,700	92,600	25.68	9.40	148,800	98,800	29.68	11.90
	4000	0.37	105,000	90,800	20.94	6.50	121,800	96,800	24.31	8.50	141,200	103,000	28.17	10.90	163,100	109,700	32.54	13.60
40LBS015W3R	4500	0.23	102,800	92,200	20.51	6.80	118,700	98,400	23.68	8.70	137,900	104,700	27.51	11.30	159,400	111,400	31.81	14.10
	5100	0.28	111,700	101,300	22.28	7.80	128,800	108,100	25.69	10.10	149,400	115,100	29.80	12.80	172,600	122,300	34.44	15.90

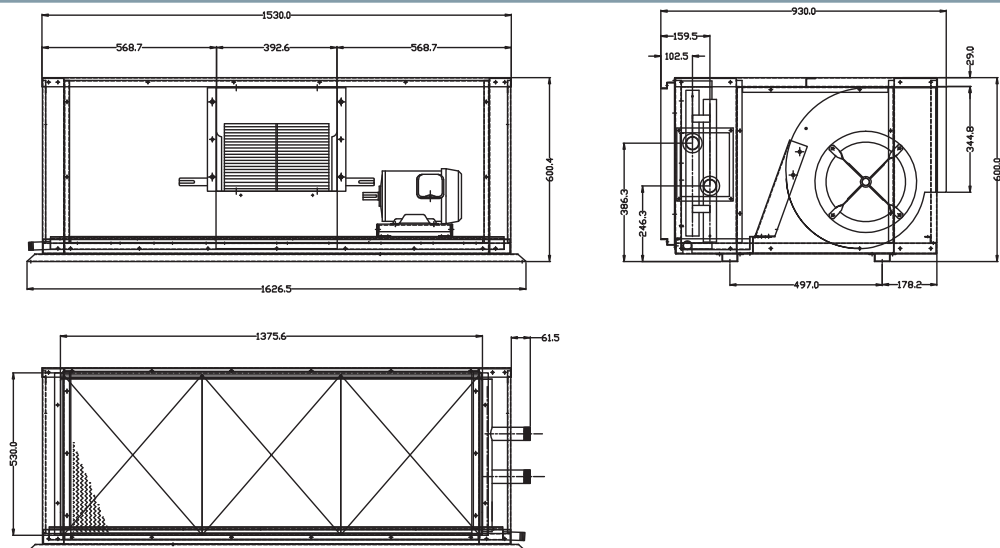
# Unit dimensions



Model: 40LS006W

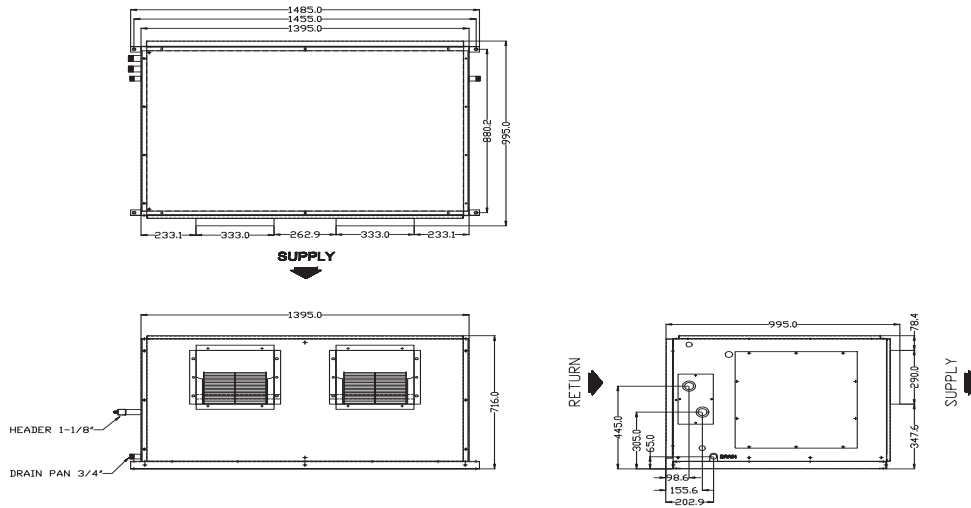


Model: 40LS008W

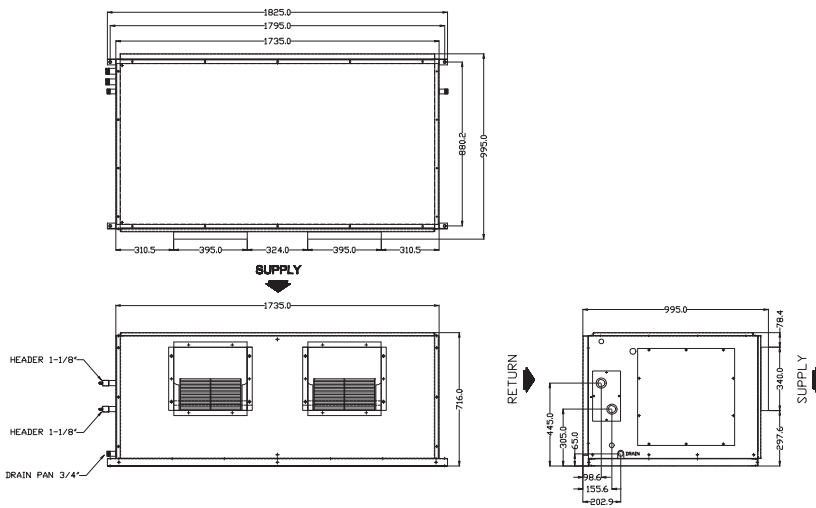


Model: 40LS010W

# Unit dimensions



Model: 40LBS012W



Model: 40LBS015W

# Fan Performance

Model	Air Flowrate (cfm)	Coil Pressure Drop (in.wg)	Total Static Pressure (in.wg)																	
			0.4		0.6		0.8		1.0		1.2		1.4		1.6		1.8		2.0	
			Fan Speed (rpm)	Power Consumption (kW)	Fan Speed (rpm)	Power Consumption (kW)	Fan Speed (rpm)	Power Consumption (kW)	Fan Speed (rpm)	Power Consumption (kW)	Fan Speed (rpm)	Power Consumption (kW)	Fan Speed (rpm)	Power Consumption (kW)	Fan Speed (rpm)	Power Consumption (kW)	Fan Speed (rpm)	Power Consumption (kW)	Fan Speed (rpm)	Power Consumption (kW)
40LBS006W3R	1800	0.22	631	0.24	728	0.29	819	0.35	909	0.4	987	0.47*	1066	0.53*	1149	0.60*	1233	0.70*	1318	0.80*
	2100	0.27	673	0.33	759	0.39	842	0.46*	921	0.53*	999	0.59*	1074	0.65*	1141	0.74*	1207	0.81*	1277	0.88*
40LBS006W4R	1800	0.29	631	0.34	728	0.39	819	0.46*	909	0.54*	987	0.61*	1066	0.68*	1149	0.76*	1233	0.84*	1318	0.92*
	2100	0.37	673	0.43	759	0.49	842	0.56*	921	0.63*	999	0.69*	1074	0.76*	1141	0.84*	1207	0.91*	1277	0.98*
40LBS008W3R	2300	0.25	710	0.41	785	0.48	862	0.54	938	0.62*	1009	0.69*	1080	0.76*	1151	0.83*	1214	0.91*	1273	1.00*
	2600	0.29	772	0.56	829	0.62*	899	0.7*	967	0.78*	1034	0.86*	1099	0.94*	1161	1.02*	1224	1.10*	1288	1.18*
40LBS008W4R	2300	0.34	710	0.41	785	0.48	862	0.54	938	0.62*	1009	0.69*	1080	0.76*	1151	0.83*	1214	0.91*	1273	1.00*
	2600	0.41	772	0.56	829	0.62*	899	0.7*	967	0.78*	1034	0.86*	1099	0.94*	1161	1.02*	1224	1.10*	1288	1.18*
40LBS010W3R	3200	0.26	580	0.53	648	0.61	724	0.71	798	0.82	868	0.93	934	1.05	992	1.16	1050	1.28*	1112	1.41*
	3500	0.30	610	0.65	672	0.74	737	0.84	806	0.96	874	1.08	939	1.2	1000	1.32*	1055	1.45*	1108	1.57*
40LBS010W4R	3200	0.35	580	0.53	648	0.61	724	0.71	798	0.82	868	0.93	934	1.05	992	1.16	1050	1.28*	1112	1.41*
	3500	0.40	610	0.65	672	0.74	737	0.84	806	0.96	874	1.08	939	1.2	1000	1.32*	1055	1.45*	1108	1.57*
40LBS012W3R	3500	0.25	694	0.48	753	0.6	849	0.71	943	0.83	1025	0.98	1111	1.1	1201	1.27*	1291	1.49*	1382	1.7*
	4000	0.3	684	0.64	777	0.77	867	0.9	951	1.04	1037	1.16	1112	1.32*	1184	1.49*	1259	1.62*	-	-
40LBS012W4R	3500	0.33	649	0.48	753	0.6	849	0.71	943	0.83	1025	0.98	1111	1.1	1201	1.27*	1291	1.49*	1382	1.7*
	4000	0.41	684	0.64	777	0.77	867	0.9	951	1.04	1037	1.16	1112	1.32*	1184	1.49*	1259	1.62*	-	-
40LBS015W3R	4500	0.25	532	0.54	639	0.7	729	0.87	819	1.06	1046	1.43	1027	1.59	-	-	-	-	-	-
	5100	0.31	546	0.68	644	0.86	737	1.05	816	1.25	893	1.45	979	1.69	-	-	-	-	-	-
40LBS015W4R	4500	0.34	532	0.54	639	0.7	729	0.87	819	1.06	1046	1.43	1027	1.59	-	-	-	-	-	-
	5100	0.42	546	0.68	644	0.86	737	1.05	816	1.25	893	1.45	979	1.69	-	-	-	-	-	-

Remark: \* Motor Size need to be changed

บริษัท แครเรียร์ (ประเทศไทย) จำกัด  
1858/63-74 ชั้น 14, 15  
ถ.เทพรัตน กม. 4.5 แขวงบางนาใต้  
เขตบางนา กรุงเทพฯ 10260  
โทร. 0-2090-9999 แฟกซ์: 0-2751-4778

Carrier (Thailand) Ltd.  
1858/63-74, 14<sup>th</sup>, 15<sup>th</sup> Floor,  
Debaratna Road, Km.4.5, Bangna Tai,  
Bangna Bangkok 10260 Thailand  
Tel. 0-2090-9999 Fax: 0-2751-4778



YOUR CARRIER MAN :

บริษัท ขอสงวนสิทธิ์ที่จะเปลี่ยนแปลงรายละเอียดข้างต้น โดยไม่ต้องแจ้งให้ทราบล่วงหน้า  
Carrier reserves the right to make changes in specifications without prior notice.