



40VMS Series

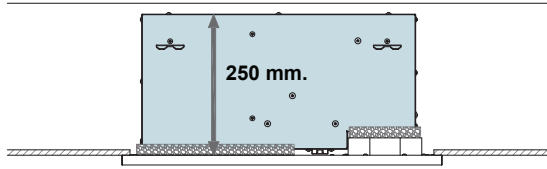
Chilled water coil 1-way cassette
12,000-60,000 BTUH



40VMS 1-Way Cassette type Series

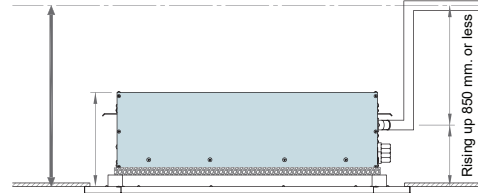
Special Feature

Compact design ultra slim body with a minimum of 250 mm. especially suitable for narrow ceiling places.



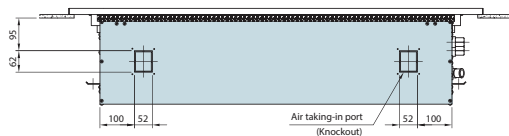
Model 12,000-24,000 Btu/Hr.

Standard built-in drain pump with 850mm. Pump head and slim body makes the installation free from limitation of story height.

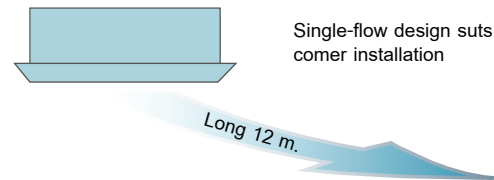


Housing construct made from galvanized steel, with the assembly easily removable from the basic unit.

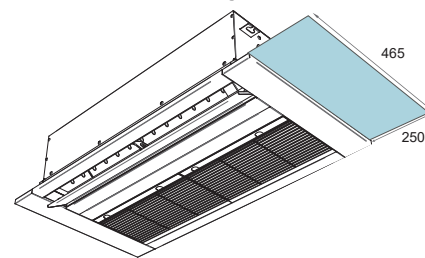
Fresh air intake port for high quality air supply requirement, creates more comfort and healthy environment.



Long air flow distance to reach cool air in wider room Maximum airflow can reach 12 meters



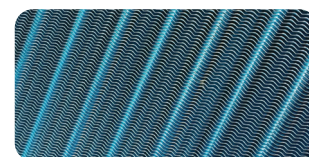
Easily to Service Front grille panel with check port (Option)



- Auto swing mechanism guarantees even distribution of air flow and better balance of room temperature SWING MODE with vertical supply grille ensures coolness throughout the room. Easily to maintenance.
- Adjustable Fan Speed with AUTO FAN cools down the room quickly. MICROPROCESSOR enables precise temperature control up to 1 degree Celsius.
- TIME DELAY, installed safety protection system, protects and prolongs usage life of compressor by delaying it for 3 minutes before restarting.
- New slim design and new color make 40VMS blended to your decor of any room. Durable anti-rust casing helps the unit last longer.
- Washable filter enhances Indoor Air Quality.

Blue fin with Epoxy and Hydrophilic coating

- Prevents dirt from sticking to the fins
- Condensation water flows and water away dirt
- Anti-corrosion caused by oxidation
- Increases the efficiency of heat exchanger





The perfect choice for Lobby small size, meeting room, hotels and reception areas.

Specification

Specification (รายละเอียดของเครื่อง)		Chilled Water Coil - 1 Way Cassette type								
Model Name (ชื่อรุ่น)	Indoor (เครื่องภายใน)	40VMS								
		012W	018W	024W	030W	036W	040W	048W	060W	
Cooling Capacity (ความสามารถในการทำความเย็น)	Btu/hr.	14,400	20,800	26,100	32,720	39,560	45,390	51,830	63,990	
Power Consumption (กำลังไฟฟ้า)	W	72	134	148	256	340	620	459	459	
Power Supply (ระบบไฟฟ้า)	V / Ph / Hz	220 / 1 / 50								
Operating Current (กระแสไฟฟ้า)	Amp.	0.33	0.62	0.7	1.2	1.6	2.9	3.6	3.6	
Motor Power	hp	1/25	1/12	1/10	1/5	1/4	1/2	3/4	3/4	
Indoor Air Circulation , Max. (ปริมาณลมหมุนเวียน)	m3/h	680	1,020	1,360	1,700	2,040	2,380	2,720	3,400	
	CFM	400	600	800	1,000	1,200	1,400	1,600	2,000	
Sound Level (Hi / Med / Low)	db(A)	42/36/27	46/40/32	47/42/34	50/44/36	52/47/39	52/48/39	53/49/41	55/50/41	
Net Weight (น้ำหนักเครื่อง)	Front Grill Panel	kg.	6	8	9	10	10	12	14	15
	Housing	kg.	20	24	27	43	44	47	49	51
Connecting Pipe - Indoor (ขนาดท่อที่ใช้)	Water Inlet (FPT)	inch	1/2"	1/2"	1/2"	1/2"	1/2"	1/2"	1/2"	
	Water Outlet (FPT)	inch	1/2"	1/2"	1/2"	1/2"	1/2"	1/2"	1/2"	
	Drain O.D. (ท่อน้ำทิ้ง)	mm.	26	26	26	26	26	26	26	

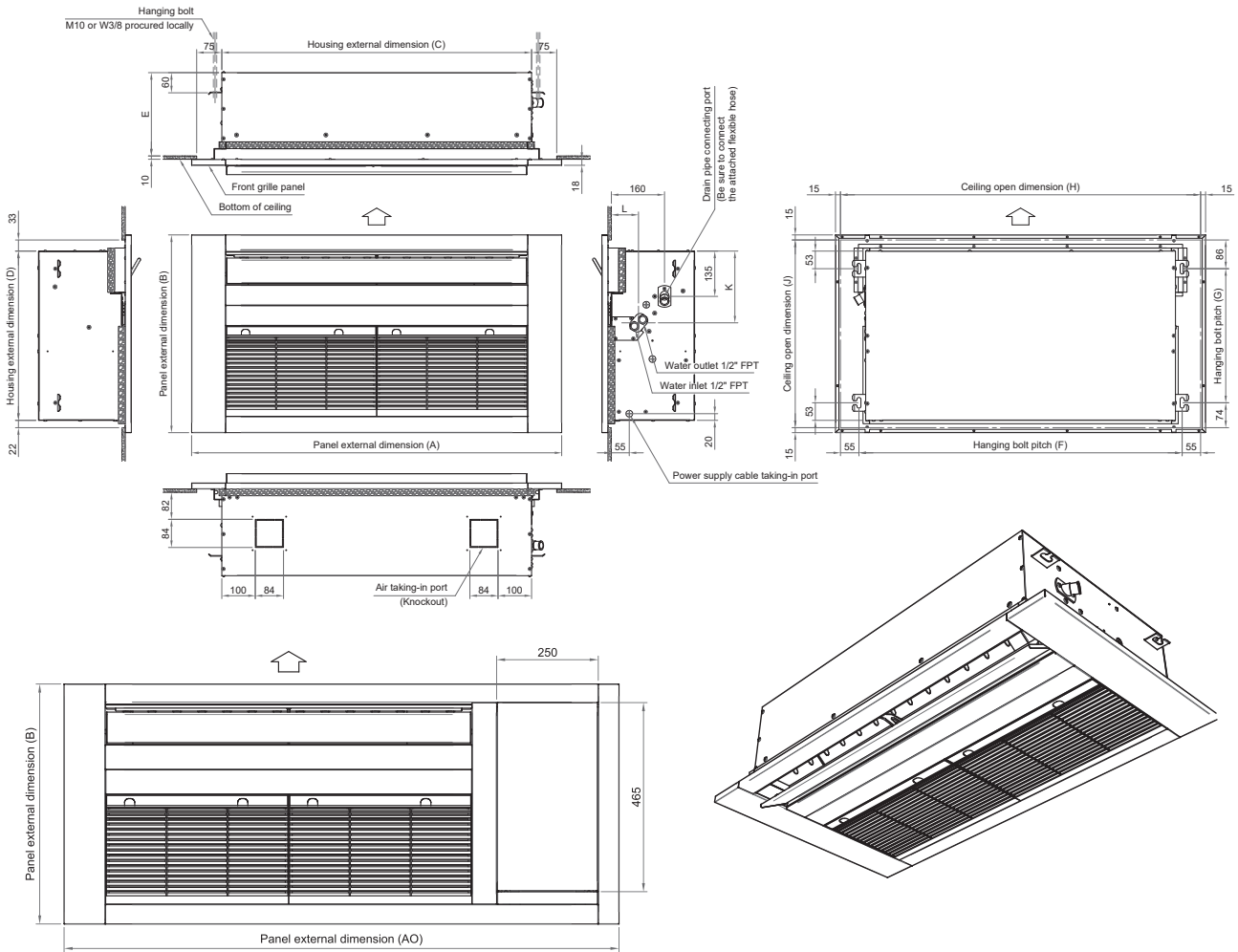
Remark : Cooling capacity based on Entering Air Temp 80 ° Fdb / 67 ° Fwb , Chilled Water Inlet/Outlet 44/54 ° F , Max air flowrate

Performance data

Model	Entering Chilled Water Temp. F	Entering Air Temp (Fdb / Fwb)															
		76 / 63				78 / 65				80 / 67				82 / 69			
		Total Capacity	Sensible Capacity	Chilled Water Flowrate	Water Pressure Drop	Total Capacity	Sensible Capacity	Chilled Water Flowrate	Water Pressure Drop	Total Capacity	Sensible Capacity	Chilled Water Flowrate	Water Pressure Drop	Total Capacity	Sensible Capacity	Chilled Water Flowrate	Water Pressure Drop
40VMS012W	40	13,200	10,200	2.63	10.80	15,300	10,900	3.05	13.70	17,500	11,600	3.49	17.60	19,800	12,300	3.95	21.60
	45	10,100	8,800	2.02	6.60	11,600	9,300	2.32	8.60	13,400	9,900	2.68	11.10	15,800	10,600	3.14	14.50
	50	7,400	7,300	1.47	4.00	8,500	7,900	1.70	5.10	10,000	8,400	2.00	6.50	11,600	9,000	2.32	8.60
40VMS018W	40	19,100	14,900	3.81	11.80	22,100	15,900	4.40	15.20	25,300	16,900	5.04	19.20	28,700	17,900	5.71	24.00
	45	14,600	12,800	2.91	7.30	16,800	13,600	3.34	9.40	19,400	14,400	3.88	12.10	22,700	15,400	4.52	16.00
	50	10,700	10,700	2.13	4.30	12,200	11,400	2.44	5.50	14,400	12,300	2.87	7.20	16,700	13,100	3.34	9.40
40VMS024W	40	24,100	19,100	4.79	10.80	27,800	20,300	5.54	13.90	31,900	21,500	6.35	17.70	36,200	22,800	7.20	22.00
	45	18,400	16,300	3.67	6.80	21,100	17,400	4.20	8.60	24,200	18,400	4.84	10.90	28,500	19,700	5.69	14.60
	50	13,600	13,600	2.72	4.00	15,400	14,600	3.07	4.90	18,100	15,700	3.62	6.60	21,000	16,700	4.19	8.50
40VMS030W	40	30,800	24,400	6.13	6.00	35,200	25,800	7.01	7.60	40,300	27,400	8.03	9.60	45,800	29,100	9.13	12.10
	45	23,100	20,700	4.61	3.70	26,700	22,100	5.34	4.70	31,100	23,500	6.21	6.10	36,000	25,000	7.17	7.90
	50	17,000	17,000	3.40	2.10	19,500	18,500	3.89	2.70	22,800	20,000	4.55	3.60	26,700	21,300	5.32	4.70
40VMS036W	40	37,200	29,400	7.41	7.10	42,800	31,200	8.53	9.10	48,800	33,100	9.72	11.50	55,500	35,100	11.05	14.30
	45	28,000	25,000	5.59	4.40	32,500	26,700	6.48	5.60	37,600	28,400	7.51	7.30	43,700	30,200	8.71	9.50
	50	20,600	20,600	4.12	2.50	23,700	22,400	4.74	3.30	27,600	24,000	5.52	4.30	32,300	25,700	6.46	5.60
40VMS040W	40	42,800	34,000	8.52	6.00	49,100	36,000	9.78	7.70	56,200	38,300	11.19	9.70	63,800	40,500	12.71	12.20
	45	32,100	28,900	6.41	3.70	37,300	30,800	7.45	4.80	43,200	32,800	8.61	6.20	50,200	34,900	10.02	8.00
	50	23,700	23,700	4.74	2.10	27,300	25,900	5.45	2.80	31,600	27,800	6.31	3.60	37,200	29,700	7.43	4.80
40VMS048W	40	48,700	38,600	9.69	8.10	56,000	41,000	11.15	10.40	64,000	43,500	12.74	13.10	72,600	46,100	14.45	16.40
	45	36,700	32,900	7.32	5.00	42,600	35,100	8.50	6.50	49,100	37,200	9.80	8.30	57,200	39,700	11.42	10.80
	50	27,200	27,200	5.44	2.90	31,200	29,500	6.22	3.80	36,100	31,600	7.20	4.90	42,400	33,800	8.47	6.40
40VMS060W	40	60,100	47,700	11.97	10.50	68,800	50,500	13.71	13.40	79,000	53,600	15.73	17.00	89,500	56,800	17.83	21.20
	45	45,200	40,700	9.02	6.40	52,500	43,300	10.48	8.30	60,700	46,100	12.11	10.80	70,400	48,900	14.05	14.00
	50	33,800	33,800	6.74	3.90	38,500	36,500	7.69	4.90	44,500	39,100	8.89	6.30	52,300	41,700	10.45	8.30

Unit Dimensions

40VMS012W-060W



Dim. Model	A	B	C	D	E	F	G	H	J	K	L	AO
40VMS012W	900	590	720	505	250	760	400	870	560	215	80	1160
40VMS018W	1104	590	924	505	250	964	400	1074	560	215	80	1364
40VMS024W	1200	590	1020	505	250	1060	400	1170	560	215	80	1460
40VMS030W	1200	680	1020	595	275	1060	445	1170	520	230	85	1460
40VMS036W	1200	680	1020	595	275	1060	445	1170	520	230	85	1460
40VMS040W	1296	725	1116	640	355	1156	535	1266	695	230	85	1556
40VMS048W	1446	725	1266	640	355	1306	535	1416	695	230	85	1706
40VMS060W	1500	725	1320	640	355	1360	535	1470	695	230	85	1760

Unit in mm

บริษัท แคนเรียร์ (ประเทศไทย) จำกัด
1858/63-74 ชั้น 14, 15
ถ.เทพรัตน กม. 4.5 แขวงบางนาใต้
เขตบางนา กรุงเทพฯ 10260
โทร. 0-2090-9999 แฟกซ์: 0-2751-4778

Carrier (Thailand) Ltd.
1858/63-74, 14th, 15th Floor,
Debaratna Road, Km.4.5, Bangna Tai,
Bangna Bangkok 10260 Thailand
Tel. 0-2090-9999 Fax: 0-2751-4778

บริษัทฯ ขอสงวนสิทธิ์ที่จะเปลี่ยนแปลงรายละเอียดข้างต้น โดยไม่ต้องแจ้งให้ทราบล่วงหน้า
Carrier reserves the right to make changes in specifications without prior notice.



YOUR CARRIER MAN :