



Controlling Fire Around the World



A World Leader in Fire Control

Thousands of Patterson Fire Pumps are installed throughout the world. Many have years of continuous service, indicative of the reliability of Patterson world-class pumps.

They are daily standing guard against the rampaging renegade, fire, and when called upon, deliver the necessary force to bring it under quick and positive control. They supply water to automatic sprinkler systems, fire hydrants, standpipes, deluge systems, fog systems or any other fire protection system.

Four types of world-class Patterson pumps are effective in fire control systems: the Horizontal Split Case, the Vertical Turbine, the Vertical In-line and the End Suction.

TYPICAL WORLDWIDE APPLICATIONS



SCB BUILDING—BANGKOK, THAILAND



GEORGIA DOME—ATLANTA, GEORGIA U.S.A.



BANK OF TOKYO—BANGKOK, THAILAND



ORIENTAL HOTEL—JAKARTA, INDONESIA

BMW MANUFACTURING FACILITY—SPARTANBURG, SOUTH CAROLINA U.S.A.



C O N T R O L L I N G F I R E

ISO 9001 Certified Manufacturer



ISO CERTIFIED INSPECTION

A subsidiary of the Gorman-Rupp Company, Patterson Pump Company is ISO 9001 certified, attesting to its world-class quality and dependability. The company has committed millions of dollars to maintaining its leadership role, and its long-standing record of product reliability through expanded production fabrication facilities and the latest in high tech, computer-aided fabrication tools and techniques.

Industry standard fire pumps are UL and ULC/cUL listed, FM and NYBSA approved, and meet the requirements set forth by the National Fire Protection Association (Pamphlet No. 20); also, worldwide LPCB, VdS, CNBOP and Hungarian approvals.

THE PATTERSON PUMP IRELAND LTD.
MANUFACTURING FACILITY



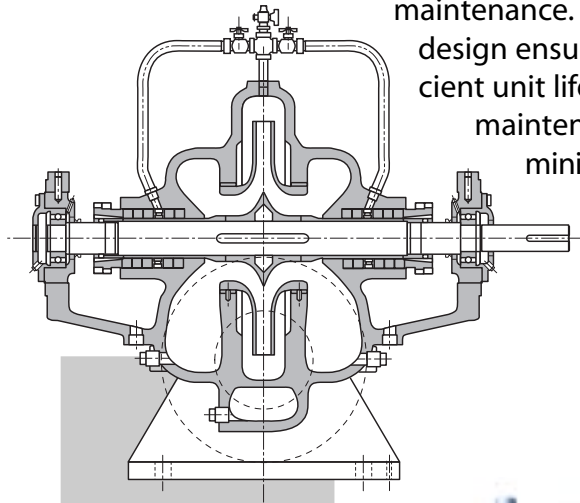
PATTERSON HEADQUARTERS,
TOCCOA, GA, U.S.A.



A R O U N D T H E W O R L D

Horizontal Split Case Fire Pumps

Precision balancing of all factors in the design of Patterson Horizontal Split Case Fire Pumps provides mechanical dependability, efficient operation and minimal maintenance. Simplicity of design ensures long, efficient unit life, reduced maintenance costs and minimum power consumption.



THIS IS THE PREFERRED FIRE PUMP FOR HIGH AND LOW PRESSURE PUMPING, AND ALSO SPECIAL SERVICE PUMPING REQUIREMENTS. IT IS SPECIALLY DESIGNED TO MEET THE RIGID MECHANICAL AND HYDRAULIC SPECIFICATIONS REQUIRED FOR APPROVAL AND LISTING BY UL AND FM FOR FIRE PUMP SERVICE.

They operate with pressures in excess of 390 psi and up to 5,000 GPM.

Whether your fire application requires an electric motor, a diesel engine or a dual drive system, vertical or horizontal, Patterson can fit your requirement.



HORIZONTAL SPLIT CASE FIRE PUMP



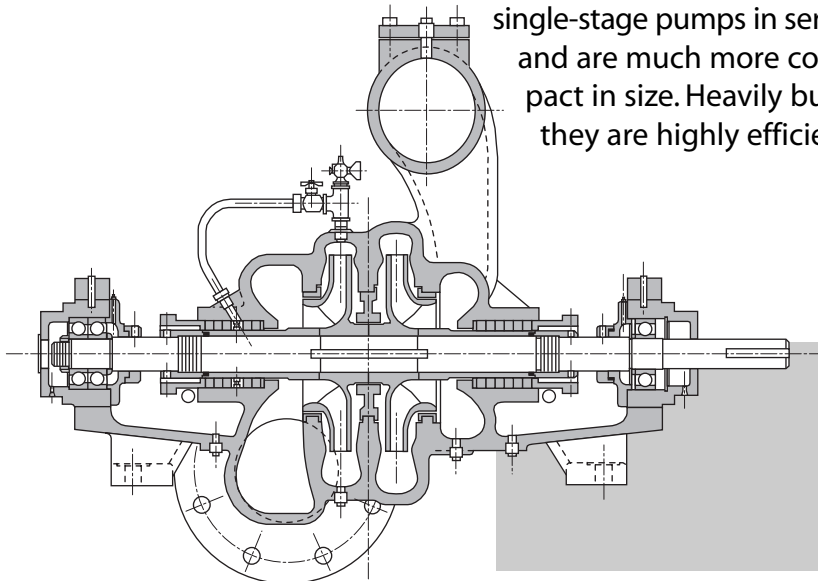
HORIZONTAL SPLIT CASE FIRE PUMP WITH A DIESEL ENGINE

High Pressure Two-Stage Fire Pumps

High Pressure Two-Stage Fire Pumps are engineered to produce as much head as two single-stage pumps in series, and are much more compact in size. Heavily built, they are highly efficient

and have every mechanical feature to assure long and reliable service.

Designed in sizes from 3" to 6" discharge, for capacities to 1,000 GPM, and for heads to 1,150 feet, they represent the most economical pumping equipment available for rugged and reliable service.



THE HIGH PRESSURE TWO-STAGE FIRE PUMP IS GUARANTEED FOR ONE SET OF CONDITIONS. PERFORMANCE GUARANTEES ARE BASED ON SHOP TEST AND WHEN HANDLING CLEAR, COLD, FRESH WATER AT SEA LEVEL AND AT A TEMPERATURE OF NOT OVER 85°F, MEETING OR EXCEEDING UNDERWRITER REQUIREMENTS.



Patterson Vertical Turbine Fire Pumps

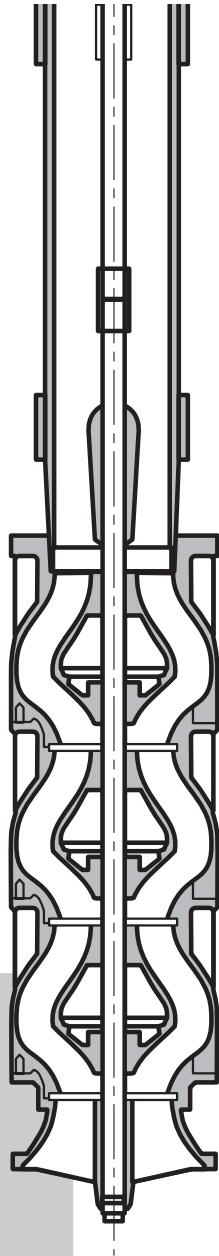
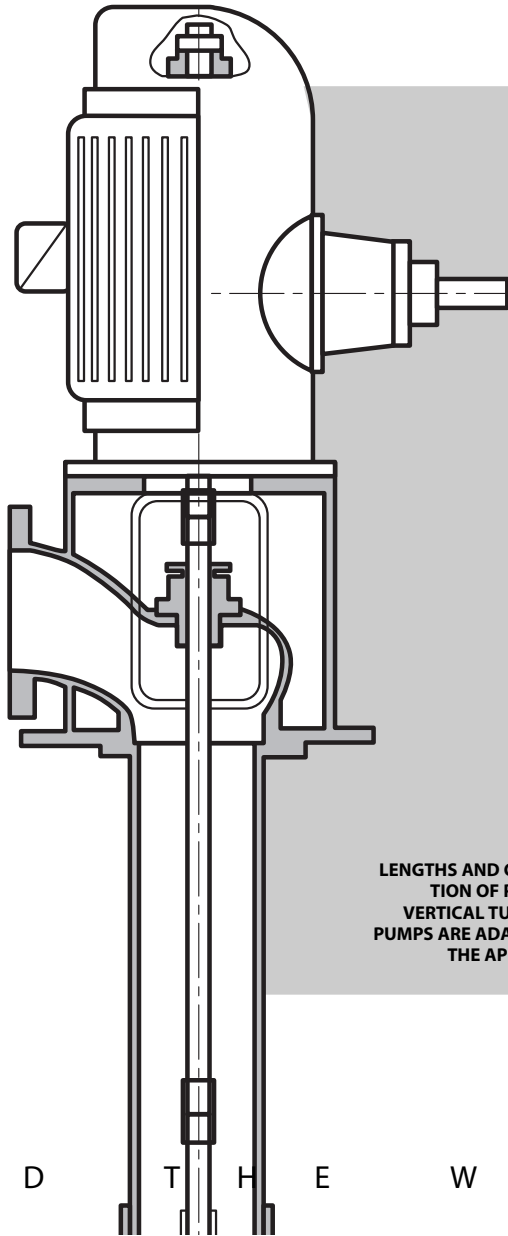
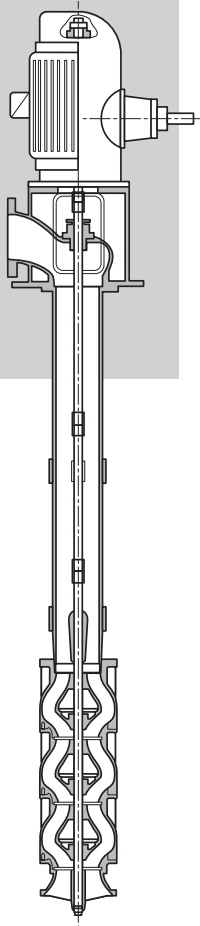
Patterson Vertical Turbine Fire Pumps employ the latest design concepts and engineering technology in producing highly efficient pumps for use in all safety applications.

They can be staged as necessary to meet desired requirements. Minimum floor space is required.

Fire fighting application capacities are from 500 to 5,000 GPM, with pressures up to 350 psi.



PATTERSON
VERTICAL TURBINE
FIRE PUMP



LENGTHS AND CONSTRUCTION OF PATTERSON VERTICAL TURBINE FIRE PUMPS ARE ADAPTABLE TO THE APPLICATION.

A R O U N D T H E W O R L D

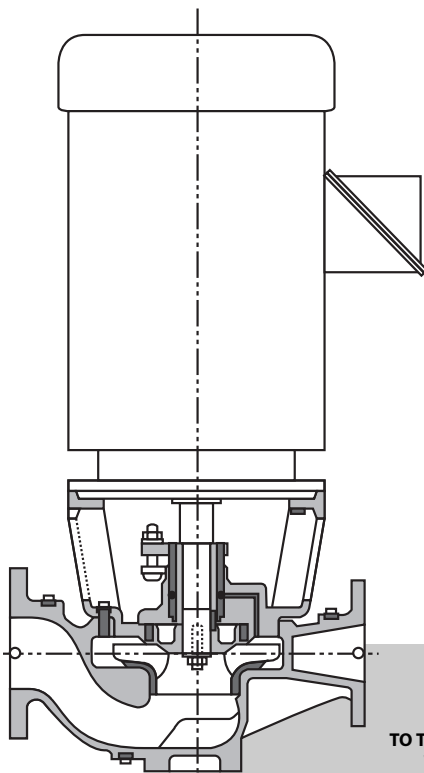
Vertical In-line and End Suction Series Fire Pumps

Patterson's V.I.P. In-line and End Suction Fire Pumps are designed for ease in adapting to existing systems or being designed into new systems in safety applications.

Their ease of installation into pipe lines eliminates the need for costly foundations or pads. Standard piping supports on either side of the pump are all that is required.

Vertical In-line suction and discharge flanges are on a common center line, 180° apart, for mounting in the pipe line. End Suction Pumps have center line suction and discharge.

Both pump types feature pressure ratings from 40 psi to 150 psi, along with flow ranges of 50 to 750 GPM.



V.I.P. IN-LINE
SERIES
FIRE PUMPS



THE PRECISION CAST IMPELLER IS DYNAMICALLY BALANCED FOR SMOOTH OPERATION. IT IS KEYS TO THE MOTOR SHAFT AND RETAINED WITH A CAPSCREW AND WASHER. BALANCE HOLES ON THE BACK SIDE OF THE IMPELLER REDUCE THRUST WITH HYDRAULIC BALANCING OF THE PRESSURES. THE ENCLOSED DESIGN IMPELLERS ASSURE OPTIMUM PERFORMANCE AND LONG SERVICE LIFE.

THE END SUCTION PUMP IS PATTERSON'S NEWEST ADDITION TO ITS FIRE PUMP LINE



The Patterson Pre-Pac® Fire Pump



INTERIOR OF A TOTALLY ENCLOSED PRE-PAC.

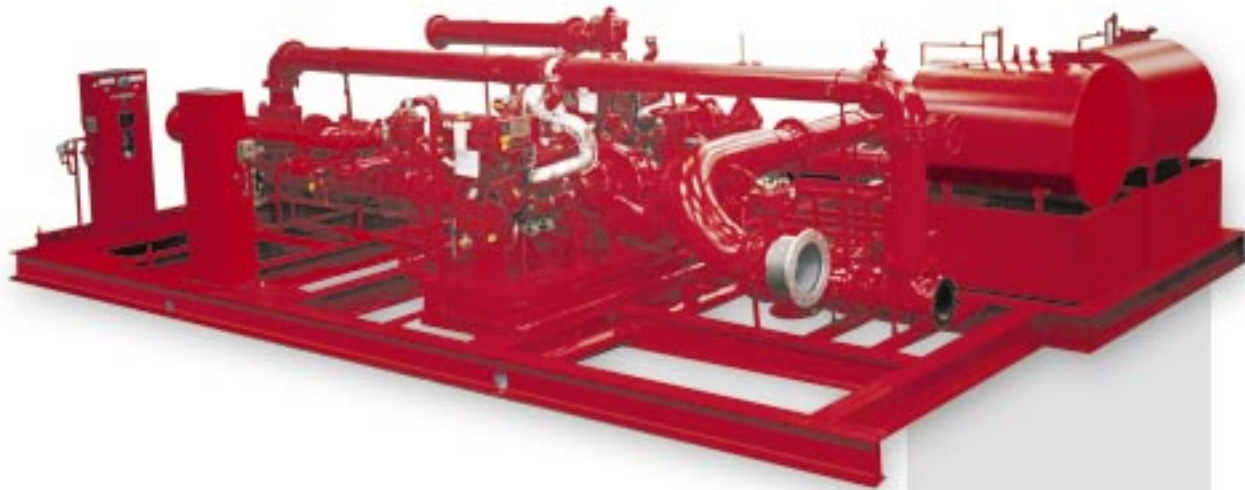
IF YOUR REQUIREMENTS CALL FOR A DIESEL UNIT OR AN ELECTRIC DRIVEN UNIT, OR BOTH, THE PRE-PAC CAN BE DESIGNED TO MEET YOUR NEEDS.

The Patterson Pre-Pac Fire Pump was created to provide quality fire control at less cost and in less space. Unlike conventional pumping systems, the Pre-Pac is self-contained so it saves money by reducing labor, engineering and installation time.

The real muscle of this pre-packaged system is Patterson's reliable split case or vertical turbine pump, featuring discharge pressures of 40 to 390 psi and capacities of 150 to 5,000 GPM.

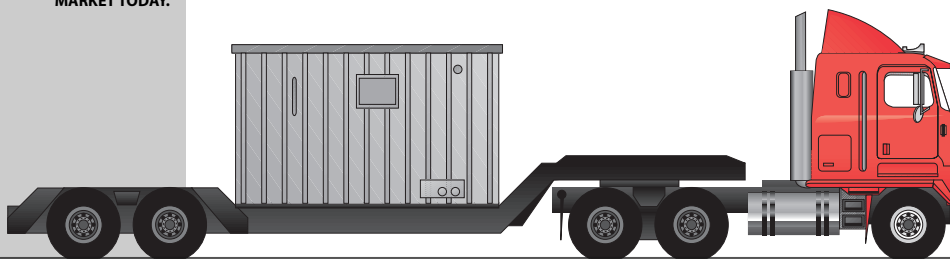
Whether you select a completely housed Pre-Pac or a base mounted package, you can be assured that all sensing lines, fittings, piping, drive, pump and controls are designed to meet, or exceed, all applicable codes.

For an added measure of security, the Pre-Pac is completely unit tested with all piping hydrostatically tested.



A BASE MOUNTED PRE-PAC.

THE PATTERSON PRE-PAC IS ONE OF THE MOST POPULAR PREPACKAGED FIRE PUMP SYSTEMS IN THE MARKET TODAY.



A R O U N D T H E W O R L D

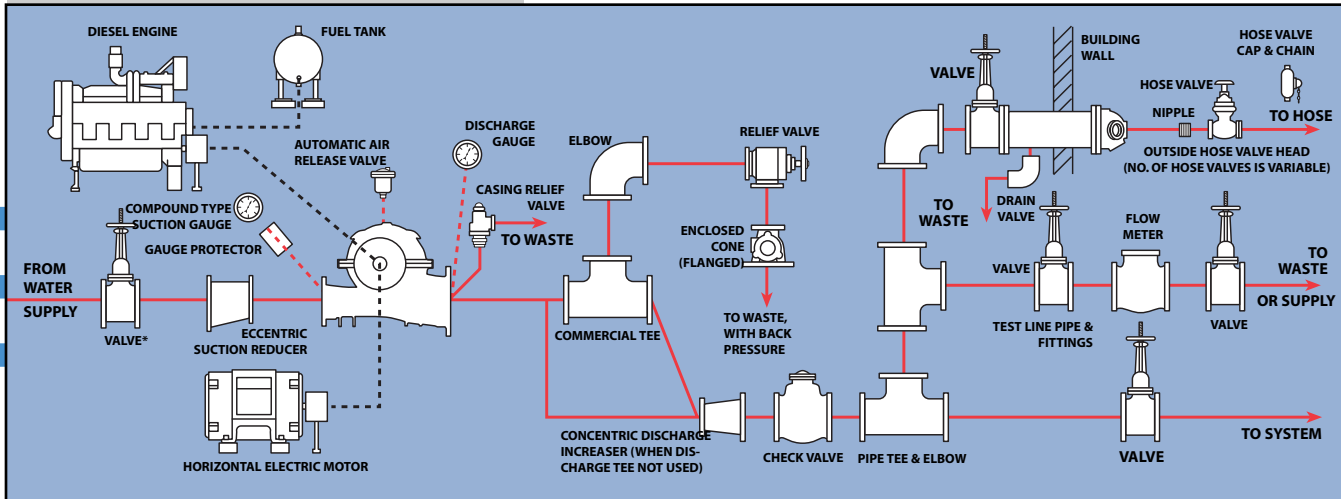


Patterson Fire Pump Accessories

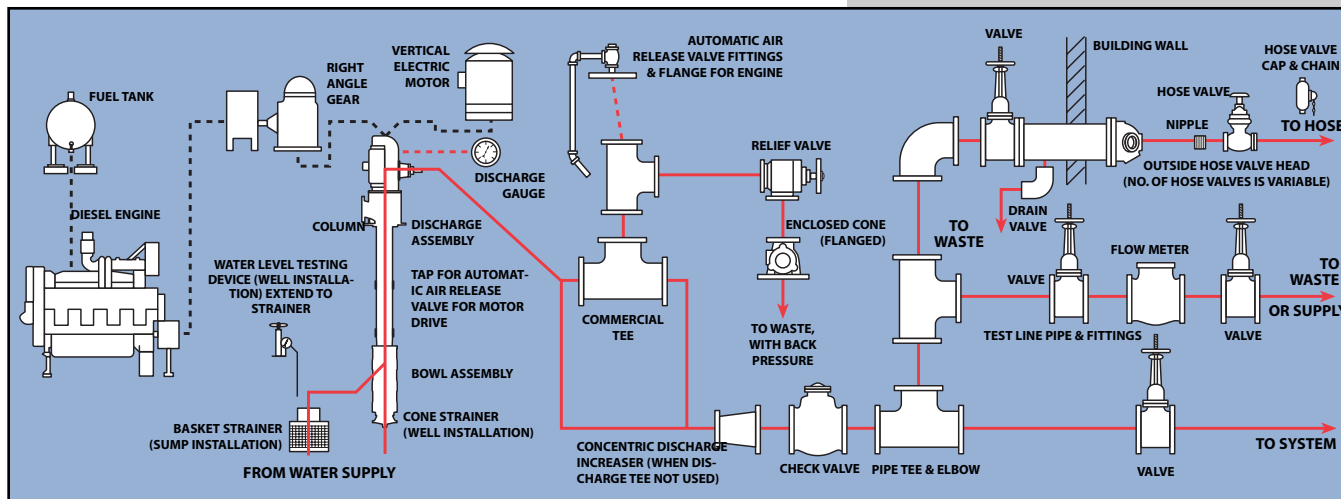
Patterson can provide a full line of accessories for fire pump installations as shown on the illustrations below. In addition, Patterson can also furnish Manual or Automatic

Motor Controls or Engine Controls; Batteries; Battery Chargers; Fuel Systems; Fuel Tanks; Coupling Guards and Splash Partitions.

PATTERSON HORIZONTAL FIRE PUMPS



PATTERSON VERTICAL FIRE PUMPS



PATTERSON PUMP COMPANY
 A Subsidiary of The Gorman-Rupp
 Company
 Post Office Box 790
 Toccoa, Georgia 30577 U.S.A.
 (706) 886-2101 • Fax: (706) 886-0023
 www.pattersonpumps.com

PATTERSON PUMP COMPANY/
 MIDDLE EAST
 P.O. Box 72083
 Helioupolis 16310
 Athens, Greece

PATTERSON PUMP COMPANY/ FAR
 EAST
 Lanna View-199/183 Village 9
 Sunphee, Muang, Chiang Mai
 50300 Thailand

PATTERSON PUMP IRELAND LTD.
 Newbrook
 Mullingar, Co. Westmeath
 Ireland

PATTERSON PUMP UK
 7 Linnet Close Tilehurst
 Reading, England
 RG31 4SR UK